



MEMBERSHIP HANDBOOK

MEMBER

**Greater Detroit Camera Club Council (GDCCC)
South Western Ontario Photographers Association (SWOPA)
Canadian Association of Photographic Art (CAPA)**

Revised April 1, 2018

Constitution

Preamble

The Windsor Camera Club, formed in 1952, was created to promote the advancement of photography as an art. The purpose of the club is to bring together persons of like mind who are dedicated to the advancement of their skills by association with other members, through the study of the work of others and through spirited and friendly competition. The club exists to offer opportunities for all to share knowledge within the club and in the community, through exhibitions and programs that excite interest in the knowledge and practice of all branches of photography.

Article 1 - Name

The name of the organization is The Windsor Camera Club.

Article 2 - Membership

Membership in the club is open to any person, subject to requirements of the bylaws.

Article 3 - Officers and Directors

The executive officers of the club are to include:

1. President
2. Past President
3. First Vice-President
4. Second Vice-President
5. Secretary
6. Treasurer
7. Statistician

The Executive Committee will consist of the officers and directors.

A quorum of the Executive Committee shall consist of five officers and directors, but no fewer than three officers.

Article 4 - Elections

The officers are to be elected by the membership at a time specified in the bylaws except for the Past President who serves until his successor qualifies.

No person may serve a consecutive term in any office. However, there are no term limitations for the offices of Secretary, Treasurer and Statistician in order to maintain greater continuity in the club's record keeping. This provision is not intended to preclude the membership from making nominations for the three offices when elections are held.

Terms of office for the President, First Vice-President and Second Vice-President will be two years.

All directors shall be appointed by the Executive Committee. All committee chairs are automatically directors. All directors may vote.

Article 5 - Vacancies

In the event of resignation, neglect of duty, incapacity, death or absence from three consecutive meetings, the Executive Committee may replace that person. The President will recommend a replacement for the approval of the Executive Committee. Should the office of President be vacated for any of the reasons stated, the Past President will recommend a replacement for the approval of the Executive Committee.

An absence may be approved by a majority vote of the Executive Committee.

Article 6 - Membership Meetings

Regular meetings of the club will be held as provided in the Bylaws.

A quorum for a membership meeting voting on a business matter will consist of one third of the members in good standing, and no fewer than two officers and one director.

Special meetings may be proposed by the President for approval by the Executive Committee.

Article 7 - Committees

Standing and special committees are to be created by the President and the Executive Committee.

All committees are required to report to the Executive Committee.

Article 8 - Constitutional Amendments

Requirements for the presentation and adoption of amendments to the Constitution are the following:

1. Notice of motion to amend the Constitution, including the text of the amendment, is to be given at a regular meeting of the club membership.
2. The proposed amendment is to be brought before the membership for discussion at the next regular club meeting.
3. A vote is to be taken on the motion at the third regular club meeting following the introduction of the motion. A quorum for the vote shall consist of one third of the members in good standing including a quorum of the Executive Committee.
4. To be adopted, the amendment must be passed by at least two thirds of those present at this meeting.

Article 9 - Bylaws

Bylaws are to be provided by the Executive Committee.

The underlying principle for the passage of all bylaws is that all members will be treated equally, without prejudice to any.

Article 10 - Rules of Competition

Rules of competition are to be provided by the Executive Committee.

Article 11 - Signing Officers

Two signatures are required for the execution of any contract or agreement, and any bank transaction. Officers with the authority to sign contracts, agreements or bank transactions include the President, Treasurer, First Vice-President and the Past President.

Any expenditure of \$750 or more requires the approval of the membership, by majority vote of a quorum in a regular club meeting.

By-Laws

Membership

1. Any person who has paid current dues is an active member of the club.
2. Any member who is in arrears for two months (four meetings) or more will be suspended from membership.
3. A member may be expelled from the club for cause. A motion to expel setting forth reasons must be submitted, in writing, to the Executive Committee. The accused person will be given the opportunity to respond to any accusations. An expulsion requires the approval of a majority of the Executive Committee. The person expelled has 30 days in which to appeal the decision to a regular membership meeting. The decision of the membership to sustain or reject an expulsion decision requires a two thirds vote of those present, provided there is at least a quorum attending.
4. No member of the club is permitted to put forth a motion, second a motion or vote on a motion when it is a conflict of interest involving that member.
5. Members who reside more than 100 km from Windsor, and will not be able to attend the two regularly scheduled meetings of the WCC, but wish to enter images for competition via the internet, will be offered a special associate membership rate of \$25 per year.

Dues

1. The annual dues of the club are payable at the first meeting in September.
2. The annual membership dues for returning members are \$55.00. Dues for new members joining during the club year will be prorated from September 1. (In this case, dues will be the number of remaining meetings in the club year x \$2.75).
3. Members must be in good standing to enter club competitions.
4. Guests, such as spouses or a person who may drive a member to a meeting, may attend but may not compete.
5. Dues are not refundable.

Nominations and Elections

1. Elections are to be held every two years with new officers assuming their duties on July 1.
2. The president will appoint a nominating committee in April to draft a slate of candidates for all elective positions.
3. The nominations committee will present its slate for the election at the second regular membership meeting in May.
4. Additional nominations may be proposed and seconded by the members and if an office is contested, the President will conduct an election by secret ballot.
5. All proposed nominees must give their consent to their nomination.
6. No member may hold more than one elective office at one time.

Duties of the Officers and Directors

1. **The President** presides at all regular membership and Executive Committee meetings, serves as chairperson of the Executive Committee and administers the affairs of the club with the assistance of the Executive Committee. The President makes all special committee appointments and appoints the chair of all standing committees with the approval of the Executive Committee. The President is an ex-officio member of all committees.
2. **The First Vice-President** presides at all meetings in the absence of the President. In the event of the death, resignation, incapacity or removal of the President, the First Vice-President will assume the duties of the President.
3. **The Second Vice-President** presides at meetings in the absence of both the President and First Vice-President, and is the officer who will assume special projects designated by the President and the Executive Committee.
4. **The Secretary** keeps full records of proceedings at regular membership meetings and meetings of the Executive Committee and is the custodian of all club official records. The Secretary is also responsible for all of the club's formal correspondence.
5. **The Treasurer** is the custodian of all monies and securities of the club, is responsible for collecting dues and maintaining a roster of members in good standing. The Treasurer pays all bills approved by motion of the Executive Committee. The Treasurer also gives a full accounting of the club's financial affairs at the regular meetings of the Executive Committee. An annual financial report summarizing the year's transactions prepared by the Treasurer and approved by a club committee appointed by the Executive Committee will be presented to the membership at a regular meeting in October.
6. **The Statistician** maintains a full record of club competitions and maintains a list of current members and their acceptances. The Statistician is in charge of awards for the WCC.

7. **The Past-President** serves on the Executive Committee for two years following his term as President.

The Directors are to assist the officers and committees of the club. The Directors are to include the Editor, House Director, Social Director, Print Director, Digital Image Director, Publicity Director, Website Director, Program Director and all other committee chairs.

1. **Editor.** Directs all publications and produces Contact, the club's newsletter.
2. **House Director.** Provides for the meeting location and the arrangement of all the meeting facilities, cares for all of the club's physical assets, and maintains order.
3. **Print Director.** Receives prints and prepares all prints for WCC competition meeting and enforces competition rules. Prepares all entries for GDCCC print competitions and arranges for entries to be delivered and returned to the place where they will be judged. Hands out ribbons earned from GDCCC.
4. **Web Site Director.** Creates and maintains the club's web site.
5. **Publicity Director.** Promotes the club through publicity utilizing all available outlets.
6. **Digital Image Director.** Reviews digital image files and enforces competition rules. Receives digital images and selects images for GDCCC competition. Hands out ribbons earned from GDCCC.
7. **Program Director.** Is the Chairman of the Program Committee and oversees planning for WCC Program meetings.
8. **Outings Director** – Arranges and promotes outings during the year.

Meetings

1. The first Tuesday of each month will be devoted to the presentation of seminars, workshops and other instructional programs.
2. The third Tuesday of the month will be devoted to club competitions.
3. The second Tuesday of the month will be the date for meetings of the Executive Committee at a place to be designated by the President.

Competition Standards and Rules

General Rules

All members and their entries must meet club standards and rules to be eligible for competition. Any entry that does not meet standards and rules will be rejected. All images must be photographed by the competing member. Any photo that a member was hired or employed to produce is ineligible for competition.

Media

There are two media with which members may compete:

1. **Prints** include colour and monochrome. Prints must be mounted on a mount board no larger than 16" by 20". Prints must be made from images originally captured with a camera. Only prints mounted on a 16"x 20" board will be eligible for submitting to GDCCC for competitions. Each print must have a completed sticker in the upper left corner on the back of the print identifying the maker, title, category and definition. Download labels from www.windsorcameraclub.com under Documents.
2. **Digital** image files (**JPGs**) that are intended for projection include colour and monochrome. These can include images captured with a digital camera, or produced by scanning film images made with a camera. The entry must have a maximum resolution of 1200 pixels on the longest edge. Submitting an image sized to less than 1200 pixels will cause the image to be displayed on the screen smaller than all other properly sized images. The image must be saved using the **sRGB** colour space.

Definitions:

Open:

Any color or monochrome image is acceptable except

1. Those images in which a wild animal, bird or insect fills more than one-third (1/3) of the frame and there are factors that prevent that image from being accepted in the Nature Definition.
2. Those images that clearly fall under the Altered Reality definition. **Altered Reality Prints must be entered in Print Open.**

Examples of acceptable modifications include: Cropping and horizontal flipping (equivalent to reversing a slide), straightening, keystone, noise removal, dodging and burning, exposure adjustment, color balance, color correction, white balance, saturation, and sharpening, "HDR" (High Dynamic Range). A stitched panoramic is also allowed.

Nature:

Nature images may be colour or monochrome

- Nature images may not be entered into the Open Category, except for Nature Landscapes which can go into either the Nature or Open Category.
- It is preferred that the title of the image of flora and fauna be identified by genus and species and not entitled as “small grey bird” or “Time for Lunch” for example.
- Any digital image that contains "Nature", where "Nature" is defined as, Nature in all its forms, including the many facets of Botany, Geology, Astronomy, and Zoology. Human elements, if present, should be unobtrusive and enhance the nature story. Those depicting cultivated plants, domestic animals or pets, still-life studies, mounted specimens, museum pieces or groupings, or similar subjects are NOT eligible. The presence of scientific bands on wild animals is acceptable. Zoo shots and Game Farm shots are eligible provided the artificial habitat is not apparent in the image. Photographs of artificially produced hybrid plants or animals, mounted specimens, or obviously set arrangements, are ineligible, as are some forms of manipulation manual or digital (see below) that alters the truth of the photographic statement.
 - The photographer may perform enhancements and modifications that improve the presentation of the image that could have been done at the time the image was taken but that does not change the truth of the original nature story.
 - Cropping and horizontal flipping (equivalent to reversing a slide), straightening, keystone, noise removal, dodging and burning, exposure adjustment, color balance, color correction, white balance, saturation, sharpening, and “HDR” (High Dynamic Range), are examples of acceptable modifications.
 - Adding elements to your images, combining separate images or rearranging and/or cloning elements in your image, removing major elements from your image other than by cropping, are **not acceptable** and will lead to disqualification of your image.

Altered Reality:

Altered Reality category involves transforming or altering one or more **photographs** to create a fictional or conceptual image

Any subject and all forms of photographic manipulation including those used in other categories are allowed.

Photographs used must come from the person creating the image and any post-processing software tools to enhance the image are allowed.

Added text is allowed but shall be used to identify the person making the image.

Categories

- There are 7 Categories available each month for submission in Competition.
- Members must use Visual Pursuits (<https://wcc.visualpursuits.com/>) to submit images for competition by the appropriate deadline (typically Sunday at midnight before the date of competition – the third Tuesday of each month Sept – June)
- Images must be uploaded for both **Digital** and **Print** Categories resized to 1200 px on the longest dimension.

Digital Altered Reality: Images may be in monochrome or colour. Use the Altered Reality Definition above to determine eligibility.

Digital Assignment: Images may be in monochrome or colour. Each May, a list of monthly topics is announced. Entries in this category must reflect the listed subject, and each image must have been photographed following the announcement of the topics (ie. taken since the topics were announced and not selected from the archives since the image fits the assignment)

Digital Nature: Images may be in monochrome or colour. Use the Nature Definition above to determine eligibility.

Digital Open: Images may be in monochrome or colour. Use the Open Definition above to determine eligibility

Print Assignment: Images may be in monochrome or colour. Each May, a list of monthly topics is announced. Entries in this category must reflect the listed subject, and each image must have been photographed following the announcement of the topics (ie. taken since the topics were announced and not selected from the archives since the image fits the assignment).

Print Nature: Images may be in monochrome or colour. Use the Nature Definition above to determine eligibility.

Print Open: Images may be in monochrome or colour. Use the Open Definition above to determine eligibility. **Altered Reality Prints** must be entered in **Print Open**

Entry Deadline

All entries for Competition night whether Prints or Digital MUST be submitted as JPG sRGB images to Visual Pursuits at <https://wcc.visualpursuits.com/> no later than the Sunday night before the Competition date (the third Tuesday of each month). Entries will not be accepted after the deadline. All Prints must be brought in by 6:45 pm on the Competition night. Refer to Attachment A and B for information on submission, sizing.

Similar Entries

Prints and digital image files that are substantially similar and produced by the same member cannot be entered in the same month.

Number of Entries

A member may enter a maximum of three entries (any combination of Prints or Digital images) in each monthly competition.

Reusing Entries

1. Images previously accepted in monthly competition are not eligible for any further monthly competitions, but may be entered in the Annual Salon.
2. An image accepted in competition cannot be entered in another competition in a different medium in the same competition year.

Entry Validation

1. The Print Director and the Digital Director will examine all images prior to competition and if necessary remove them from the competition.
2. Nudity or Implied Nudity: Pictures entered into competition showing the pubic area, or female nipples will not be allowed or published in the Contact or allowed on the Windsor Camera Club website. Decisions about image entry will be made by the Print Director or the Digital Director before or on the Competition Night, as long as there is not a conflict of interest. If there is still a concern, decision by the Club President will be final.

Judging

1. All entries will be judged by a panel of three judges and one alternate judge.
 - a) All judges must be “**Advanced**” photographers.
 - b) A judge may not vote on his or her personal entries.
 - c) A judge may abstain from voting if he/she feels the entry cannot be judged without prejudice.
 - d) In all cases subject to (b) and (c), the judge will enter a zero in the judging box and the entry will then be voted upon by the alternate judge.
 - e) Judges Re-scoring: If the scores of the judges differ by more than 30, they will be asked to re-score the image. This is only to ensure that an error was not made in entering the score.

2. Each judge may award a maximum of 100 points. The average of the scores of the three judges will be used by the Statistician to determine the nightly Award Winners in each category of competition.

Member Advancement

1. A member is moved up in class from Novice to Advanced when the member receives **10 First Place Ribbons** or has submitted **40 Entries**.
2. If an experienced photographer of recognized skill joins the club, the Executive Committee may ask that member to voluntarily advance to the “**Advanced**” class in the interest of fair competition.
3. The advancement will take place at the beginning of the next competition Year (i.e. The April competition)

GDCCC Entries

1. The Print Director selects prints to submit to GDCCC Competitions based on the rules set out by GDCCC.
2. The Digital Director selects digital entries to submit to GDCCC Competitions based on the rules set out by GDCCC.

Attachment A

Identification for Print Submission

Identification of a print will be placed on the back of the mount board in the upper left-hand corner of either a vertical or horizontal print.

The identification label must include the following:

Maker's name

Date of Entry

Title of the image

Maker's class ("N", or "A")

Category (Open, Nature, or Assignment)

Club name

Maker: _____

Date: _____

Title: _____

Novice

Advanced



Open

Nature

Assignment

Windsor Camera Club

Attachment B

Digital Entries

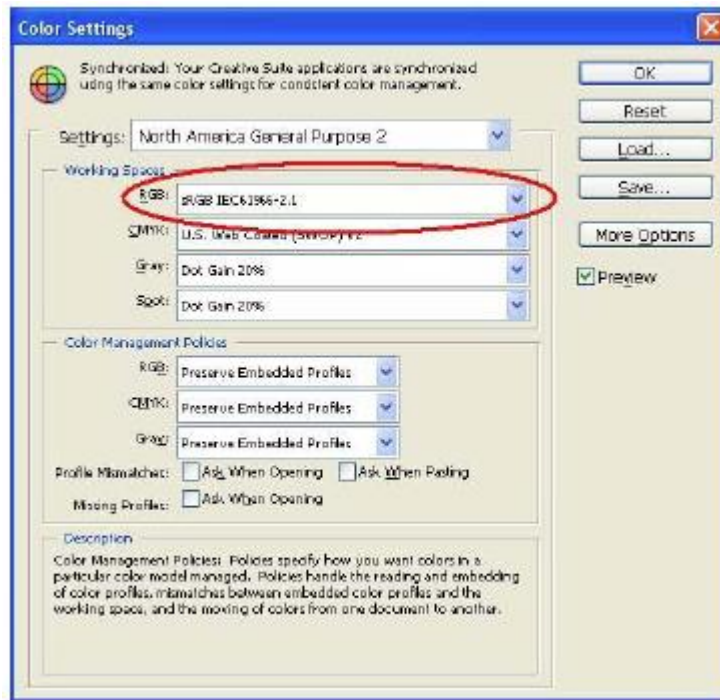
Digital entries are required to use the color space, image size, and image identification and file naming format shown in the following steps to be entered in competition: **These same instructions apply to digital image files submitted for print entries.**

Converting an Image to sRGB Color Profile

If you are using Photoshop from the menu bar select “**Edit**” then “**Color Settings**” to bring up the box shown below.

You will need to select “**sRGB IEC61966-2.1**” in the RGB box as shown below.

Finally click OK and your image will be converted to the required color space profile used for projecting of all images entered into competition.



If you are using Photoshop Elements from the menu bar select “**Image**” then “**Convert Color Profile**” then you will need to select “**Apply sRGB Profile**”.

Note: Once you have converted the color profile to “**sRGB**” your image may appear to change in color compared to your original image, Adobe RGB (1998) used by most cameras has a larger range of colors but most if not all projectors can only project the smaller “**sRGB**” range of colors.

Editing, Cropping and Color Adjustments

It is recommended that you edit, crop and make any color adjustments to your images after converting to the “sRGB” color profile required for all entries submitted into **WCC Digital Projection Division (DPD)** competition so you will know exactly what your image will look like when it is projected. (See note above)

Note: It is important that if you are going to crop your image that you do so before you resize your image in step 4 below. If you crop your image after step 4 below you may end up with a much smaller image than you expect and may need to resize you image again.

Resizing

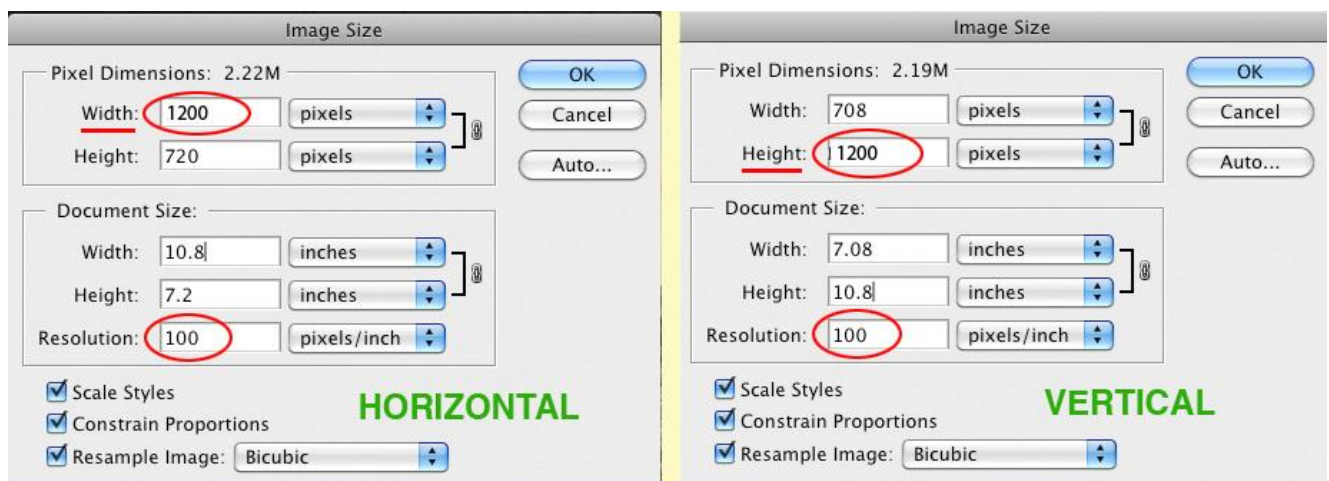
Using Photoshop select from the menu bar “**Image**” then “**Image Size**”, if using Photoshop Elements select “**Image**” then “**Resize**” then “**Image Size**” to bring up the box shown below.

First make sure there are check marks in the “**Scale Styles**”, “**Constrain Proportions**” and “**Resample Image**” check boxes as shown below.

Next change the dimension in the box which has the largest value for the “**Width**” or “**Height**” to **1200 pixels** or less as shown below.

Finally click **OK** and your image will be resized to the required maximum pixel size allow for competition.

Note: The actual “Resolution” value doesn’t have any effect for projection of an image, but changing this value will assist in maintaining consistency when we need to add text or titles to the images to produce slide shows, catalogues or website pages of winning entries.



For a horizontal image, make the width 1200 pixels.

For a vertical image, make the height 1200 pixels.



Always make the longer dimension 1200 pixels.



Saving the Image

Using either Photoshop or Photoshop Elements from the menu bar select **“File”** and then select **“Save As”** to bring up the box shown below.

Attention: Do not use the “Save” option instead of the “Save As” option as this will overwrite your original image file and negatively reduce the quality of you original image. Always save your file by creating a new name that is not currently present in the directory you wish to save it to. Always keep your original file in a safe place and only convert, edit, etc. and save a copy of the original file.

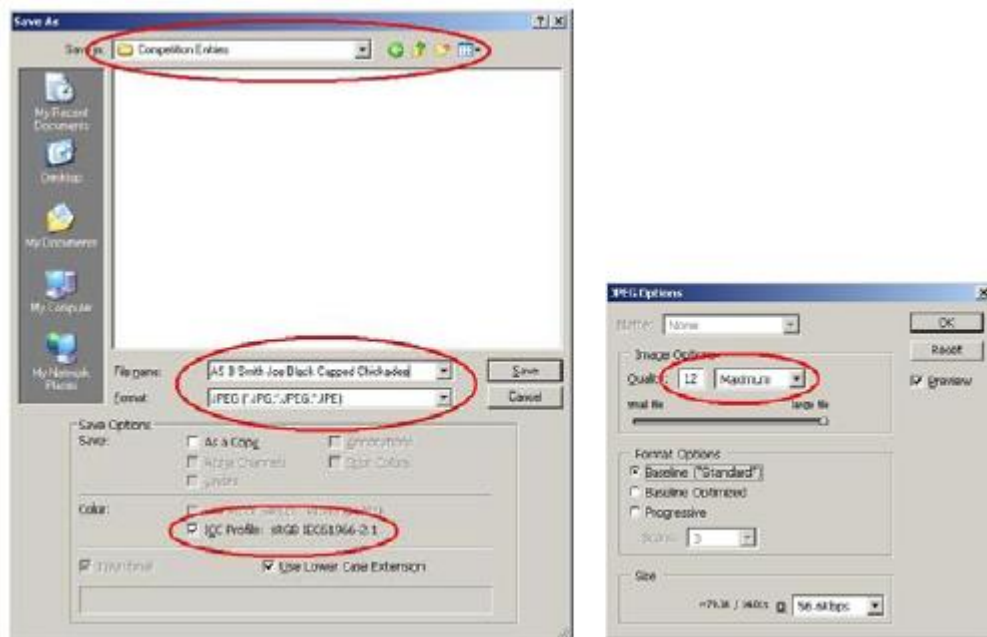
First select the file format **“JPEG (*.JPG;*.JPEG;*.JPE)”** in the Format box as shown below.

Next make sure there is a check mark in the **“ICC Profile: sRGB IEC61966-2.1”** box as shown below.

Next use the **“Save in:”** option box to select a director or location on your hard drive where you wish to store the file.

Next select a value of **“10 or 12”** in the **“Quality”** box as shown below.

Finally click **“OK”** and your image will be saved to the directory you selected.



Submitting Entries for Competition

Digital copies of entries for either **Prints** or **Digital** entries must be uploaded to Visual Pursuits at <https://wcc.visualpursuits.com/> by Midnight Sunday night prior to the Competition Night (the 3rd Tuesday of each month September-June).

Attachment C: Using Visual Pursuits

Login using the correct **email address** and **password** supplied. Go to **Competitions > Submit Images to a Competition**. Choose the **Competition Type** for each image to submit

Submit Images to a Competition

[Show Me How to Submit Images to a Competition](#) [Show Me How to Create an Image Sequence](#)

Current Competitions

Select the competition you wish to enter. If a competition has been closed for entries you will be able to display your images in the

Include closed competitions

Submit images that belong to this user: (Available only for Competition Managers)

Dan Eberwein [Select Member](#)

You may click on a heading to sort by that column.

	Competition Date	Competition Type		Competition Title	Close Date/Time
Select	19 May 2015	Digital Altered Reality		2015 May Digital Altered Reality 0 of the 3 allowed entries were submitted.	17 May 2015 23:30 EDT
Select	19 May 2015	Digital Assignment		2015 May Digital Assignment 0 of the 3 allowed entries were submitted.	17 May 2015 23:30 EDT
Select	19 May 2015	Digital Nature		2015 May Digital Nature 0 of the 3 allowed entries were submitted.	17 May 2015 23:30 EDT
Select	19 May 2015	Digital Open		2015 May Digital Open 0 of the 3 allowed entries were submitted.	17 May 2015 23:30 EDT
Select	19 May 2015	Print Assignment	Prints	2015 May Print Assignment 0 of the 3 allowed entries were submitted.	17 May 2015 23:30 EDT
Select	19 May 2015	Print Nature	Prints	2015 May Print Nature 0 of the 3 allowed entries were submitted.	17 May 2015 23:30 EDT
Select	19 May 2015	Print Open	Prints	2015 May Print Open 0 of the 3 allowed entries were submitted.	17 May 2015 23:30 EDT

After choosing the **Competition Type** by clicking **Select** on the left, next click **Upload or Catalog a Single Image into the Competition**

Submit Images to a Competition

Show Me How to Submit Images to a Competition

Show Me How to Create an Image Sequence

Competition: 2015 May Digital Open

Competition Date: 19 May 2015

Competition Type: Digital Open

Competition Level: Advanced

Maximum pixel width for images: 1080

Maximum pixel height for images: 1080

Note: The Image Resolution (pixels per inch or centimeter) does not matter and is never used. If you submit an image larger than the maximum if you do it in Photoshop or a similar program.

Submissions will be automatically converted to an sRGB profile when displayed on this website. The Image Competition Manager program pro

Maximum title length: 2000 characters.

Image Sequences are not permitted.

Images you entered into this Competition

You have entered 0 of the 3 images you are allowed to enter into this competition.

You have not entered any images to this competition.

Upload or Catalog a Single Image into the Competition

Upload Multiple Images into the Competition

Add Images from my Image Library

Print Labels for Print Submissions

Return to Competition List

To add a New Image: Click Select and choose the file from your computer. The name of the file is irrelevant. Next, type in the **Title** of the file – eg. Great Blue Heron (Note: **No two pictures in your library can have the same Title**. If this is another Great Blue Heron – add a 2 on the end)

Add a New Image

Note that images in your image library that are not in any competition or gallery will be automatically deleted three months after their upload date.

Upload an Image File.

You are only required to upload an image for a Digital Image Type. Prints and Slide images do not require an image file, but one can be supplied to allow the image to be represented on the website and in competition shows.

Use the "Select" button below to select the file to upload. The upload will start immediately, allowing you to fill in the rest of the form while the file is uploading. Your file will not be saved, however, until you click the "Save" button below. You must wait until the upload completes before you click that button.

If you using a HTML 5 browser (Internet Explorer 10+, Firefox v. 4+, Google Chrome, or Safari v5+), you can drag and drop files over the "Select" button. For other browsers click here for information on browser support and optimizing your experience.

Most image uses specify a maximum image size in pixels. If you exceed the maximum size allowed, your upload time will be unnecessarily long and your image will be resized after the upload completes. The system maximum size is 2560 x 1700 pixels. If your image size exceeds the maximum file size allowed for the website (4MB), you will see an error message and the file will not be uploaded.

Click here for information on how to resize an image.

Your file name must end with ".jpg" or ".jpeg" to identify the format of the image. Macintosh users: you MUST use a valid Windows file name. File names cannot start or end with blanks. File names may not contain any of the following characters:
\\ / * ? < > |

Select

Image Type: Digital

Note: Titles are unrelated to file names and should not contain the Author's name or any competition identifiers. Titles cannot exceed 2000 characters in length. Competitions may limit titles to shorter lengths.

Title (Required):

English | Spell Check

Owner Image Id:

Wildlife: Check this box if this image qualifies as a "Genuine Wildlife" image as defined in any special competition that uses this designation. This is generally considered a subcategory of a Nature competition.
 Genuine Wildlife Image

Restrictions: If this image contains material that is inappropriate for public viewing, such as nudity, uncheck this box to prevent the display of this individual image to people that are not logged into your website. When checked, the public display is controlled by options in your personal options, which are managed using the menu My Account, My Account Settings:
 Allow the display of this image based on my personal profile
 Allow submission to any parent competition

Please only upload only your own images. You will become the author of any images you upload and your images will be marked with your copyright, if a copyright is not already tagged in the image. Administrators can specify a different person as an image author, allowing them to upload images on behalf of others.

Cancel Save

In the bottom left corner, click **Save** and then **Return to Competition List** for the next entry

Salon and Annual Rosettes, Medallions and Trophies

The following trophies, medallions and rosettes are awarded at the annual salon and banquet, to reward photographic excellence.

Salon

Awards will be limited to the 25 percent of entries.

Only images that have qualified in monthly competition during the 12 months starting in April of the previous calendar year to March of the current calendar year may be entered.

Note: "Qualified" means that an image has been entered into competition and has not been disqualified for any reason (e.g. inappropriate material, more than three entries on a competition night, an image that has been previously entered, etc.).

If a print that qualified during the competition year was lost or damaged and the maker wants to enter the image in the salon, a duplicate image can be submitted for approval by the Salon Committee. The name of an image that was previously accepted can be corrected for entry in the Salon, with the approval of Salon Committee.

Rules for Portrait: One person from close up to full length. The portrait can be in an environment, as long as the person is the main subject.

NOTE: Salon Entries cannot change category except for those entered into the Assignment Category during the monthly competitions. Monochrome Prints must be entered in the Monochrome Print Category. Salon Entries cannot change media except that if a print that has qualified in monthly competition during the competition year fits the Altered Reality Category, its associated digital file may be entered in the Altered Reality Digital Category.

Salon Awards

Rosettes

First place (blue), second place (red), third place (yellow) and Honourable Mention (White) rosettes will be awarded in the following categories (subject to the 25% rule).

1. Open Digital Image
2. Nature Digital Image
3. Altered Reality Digital Image
4. Monochrome Print
5. Open Colour Print
6. Nature Colour Print
7. Portrait Digital Image
8. Portrait Print

Medallions

Medallions will be awarded for:

1. Open Digital Image
2. Nature Digital Image

3. Altered Reality Digital Image
4. Monochrome Print
5. Open Colour Print
6. Nature Colour Print
7. Best Portrait of the Salon (Print or Digital Image)

F.J. Ted Douglas Trophy

The F.J. Ted Douglas Trophy and keeper medallion will be awarded to the best image of the Salon (selected from the above medallion winners and is in addition to that medallion).

Annual Awards

Medallions

Medallions will be awarded in the following categories:

1. High Total Points Novice Open Digital Images.
2. High Total Points Advanced Open Digital Images
3. High Total Points Novice Nature Digital Images.
4. High Total Points Advanced Nature Digital Images.
5. High Total Points Novice Altered Reality Digital Image
6. High Total Points Advanced Altered Reality Digital Image
7. High Total Points Novice Open Prints.
8. High Total Points Advanced Open Prints.
9. High Total Points Novice Nature Prints.
10. High Total Points Advanced Nature Prints.
11. High Total Points Novice Assignment (Digital Images and Prints).
12. High Total Points Advanced Assignment (Digital Images and Prints).

Note: Points

1. Points are awarded during the monthly competition with first place (blue ribbon) being given a value of 3, second place (red ribbon) given a value of 2 and HM (yellow ribbon) given a value of 1. If a member obtains more than one ribbon of the same value in a category, the second and/or third ribbon value will be demoted by one.
2. At the end of the competition year, if there is a tie for high total points, then the award goes to the most first place ribbons. If there is still a tie then the award goes to the highest total scores."

Frank Dumouchelle Award

The President gives this award and keeper medallion to a member for the year's highest achievement in club activity.

